



**WESTPAQ ENGINEERING LTD**  
A BAY MATRIX GROUP (USA) COMPANY

## CORPORATE PRESENTATION | 2022

Alen Platform  
Bay Matrix Group - AGMP Contract  
Host Facility Modification

WESTPAQ.COM





**NIGERIA**



2 Idowu Taylor Street, Wing A,  
2nd Floor, Victoria Island, Lagos

email: [info@westpaq.com](mailto:info@westpaq.com)

Tel: 0816 431 3788,  
0813 880 0333,  
0706 285 8816

## OUR GEOGRAPHICAL FOOTPRINT / LOCATIONS



**USA**

14140 South West Freeway,  
Suite 100, Sugar Land, TX 77478

email: [info@westpaq.com](mailto:info@westpaq.com)

Tel: 346 391 5432

**EQUATORIAL  
GUINEA**



K4 Carretera del Aeropuerto  
Barrio Paraiso, Malabo

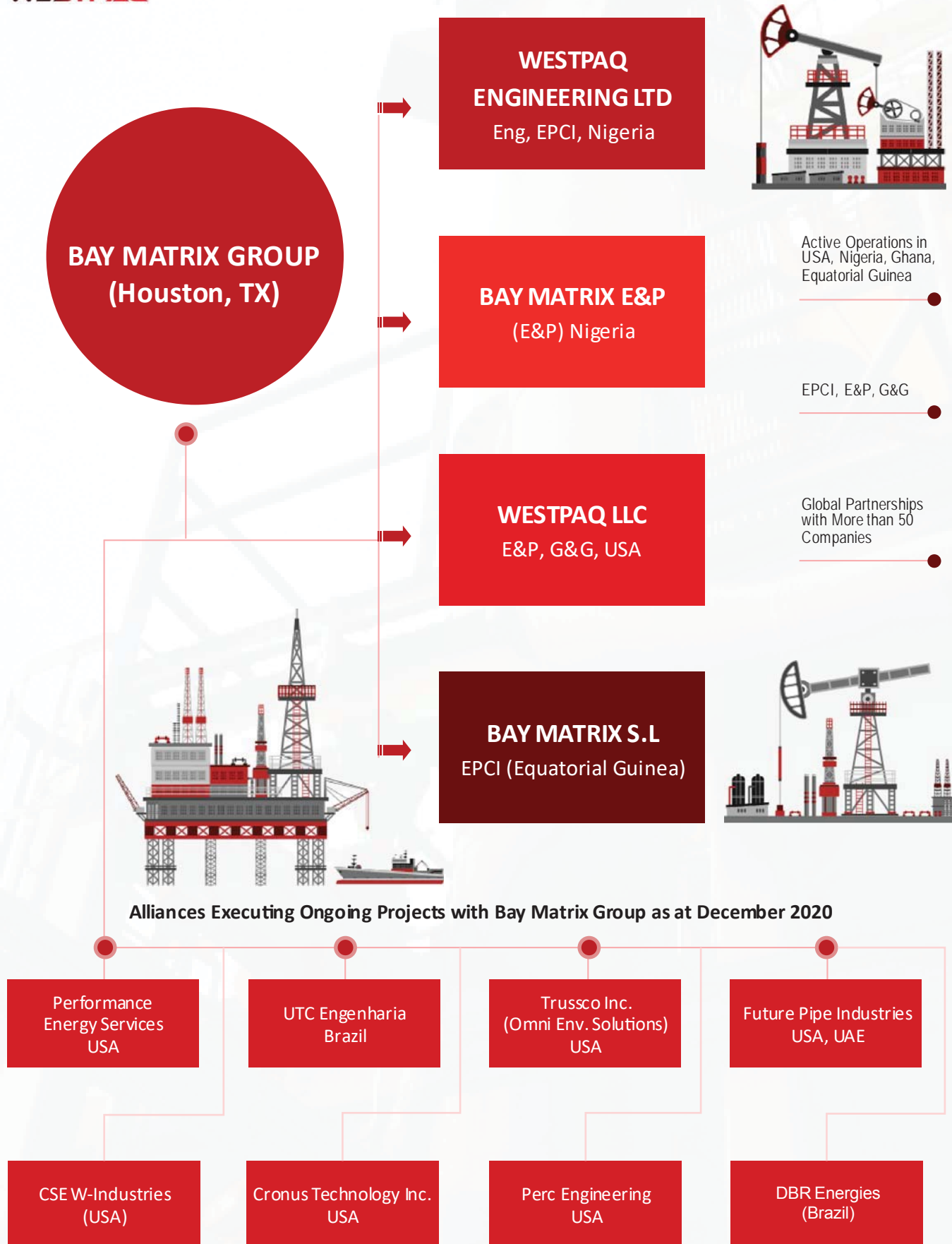
email: [info@baymatrixgroup.com](mailto:info@baymatrixgroup.com)

Tel: +240 222 453 775



# WESTPAQ ENG LTD

## OPERATIONAL STRUCTURE / ALLIANCES





## OPERATIONAL STRUCTURE PARTNERS / ALLIANCES

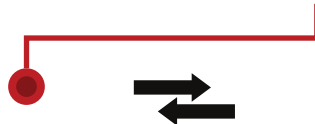


# BUSINESS STRATEGY

## MAJOR PROJECT EXECUTION

↓  
↓  
↓  
↓

We shape effective business development decisions to provide top class global solutions at a local level through Cross Business Capability Integration, and application of innovative partnerships



### PROJECT MANAGEMENT TEAM

### BAY MATRIX GROUP Local Entity



## RESPONSIBILITIES

- ⇒ Assign Project Responsibility Matrix Btw Group PMT, International Partners & Established Local Offices
- ⇒ Establish Core Expat Support & Local labor workforce on Project Basis
- ⇒ Project Planning and Scheduling
- ⇒ Begin Procurement/light construction on light facilities depending on project needs

## RESPONSIBILITIES

- ⇒ Provide Fully Established Integrated Local/International team with local presence and capacity for execution of major projects
- ⇒ Establish Staff yard for onshore fabrication (if applicable)
- ⇒ Mobilize Equipment for Project Execution and local rental capability
- ⇒ Develop plans for in-country Major Project Execution



## **BUSINESS STRATEGY**

### **UTILIZING LOCAL CONTENT / INTERNATIONAL COLLABORATION AS A COMPETITIVE ADVANTAGE**

# **BUSINESS STRATEGY**

- ⇒ Utilize strategic alliance/partnership to enhance Local Participation in Major Oil and Gas Project Execution.
- ⇒ Increase capacity of local companies to participate in the execution of major projects in the Oil and Gas Sector as vehicles for national investment in line with the host country's National Content and Capacity Development vision
- ⇒ Compliance with local content utilization as required by government policy for the socioeconomic development of the host country to ensure optimization of National industry participation
- ⇒ Utilize top talent /expertise with deep insight and local content qualification
- ⇒ Provide global standard solutions and best practice for assessing opportunities
- ⇒ Benefits include access to Projects in areas of operations from local participation through partnership(s) between local and
- ⇒ Our Business Strategy is focused on delivering global standard solutions in our areas of operations through local and international collaboration

# COMPETITIVE ADVANTAGE

- ⇒ Local Content Compliance
- ⇒ Provide comfort/confidence for key international subcontractor/partner engagement
- ⇒ Utilization of regional BMX footprint - qualified resources from sister companies
- ⇒ Promote technical solutions aligned with Client preferences
- ⇒ Mitigation of risks associated with local content demands
- ⇒ Provide Global Standard Project Management & Execution through the integration of international and local teams to provide top-class global solutions at a local level
- ⇒ Deep insight and Knowledge, understanding of local requirements and regulations
- ⇒ Utilization of pool of qualified and experienced resources from countries within the West African region



# RECENT PROJECTS (Group)

PROJECT	SOW	COMMENT
<b>Maintenance Engineering and Project Management Support Services (MEPSS)</b>	Engineering, Procurement and Project Management & Support Services	⇒ Ongoing
<b>Mechanical &amp; Structural Installation</b>	Offshore Brownfield Modification, Construction & Mechanical Hook-up	⇒ Ongoing
<b>Engineering Advisory &amp; Consultancy</b>	Engineering & Project Management Consulting, Feasibility studies for the Leki Free Zone Power Infrastructure Development	⇒ Ongoing
<b>Manpower Supply &amp; Project Support Services</b>	Provision of Contingent work force; Engineers and craftsmen, Project Management and Support	⇒ Ongoing
<b>E&amp;I offshore Construction/ Installation</b>	Alen Host Facility Electrical and Instrumentation Turnkey	⇒ Ongoing
<b>Procurement</b>	Pipes, Fittings, Flanges, Valves, Equipment, Materials & Consumables for Offshore Brownfield Construction	⇒ Completed
<b>Subsea Tie-back to production Manifold</b>	Subsea/Host Facility Interface/Project Management	⇒ Planning Phase
<b>Host Facility Topside Fabrication</b>	Fabrication of Topsides and other Miscellaneous	⇒ Completed
<b>Fabrication</b>	Multiple Fabrication Projects	⇒ Completed
<b>Work Pack Development / TAR-2020 Project Management &amp; Planning</b>	Project Management, Planning and Work Pack Development	⇒ Completed
<b>Alen Systems Modification</b>	Electrical Systems Upgrade, Modification and Installation	⇒ Ongoing
<b>Platform Integrity Inspection Services</b>	Inspection Services	⇒ Completed
<b>Subsea Inspection</b>	Subsea AUT, Survey, Umbilical, Utility Inspection Services	⇒ Completed
<b>Offshore Repair/Facilities Maintenance Services</b>	Installation of Fibre-bond, Caisson Pipe Sections on offshore Platform	⇒ Completed
<b>Offshore Design Services</b>	Design overboard Hung Scaffold for Alen Platform	⇒ Completed
<b>Offshore Mechanical &amp; Structural Installation - Ops</b>	Alen Field Turn Around (TAR)	⇒ Ongoing
<b>Offshore Security Systems Modification</b>	Installation of Security Infrastructure on Platform	⇒ Ongoing

# RECENT PROJECTS - 2022

---

## (GROUP)



Maintenance - Strainer and Scaffolding Installation



Prepping 42" Firebond and Fit up for Field Welds



Installation of WHP Metering Skid

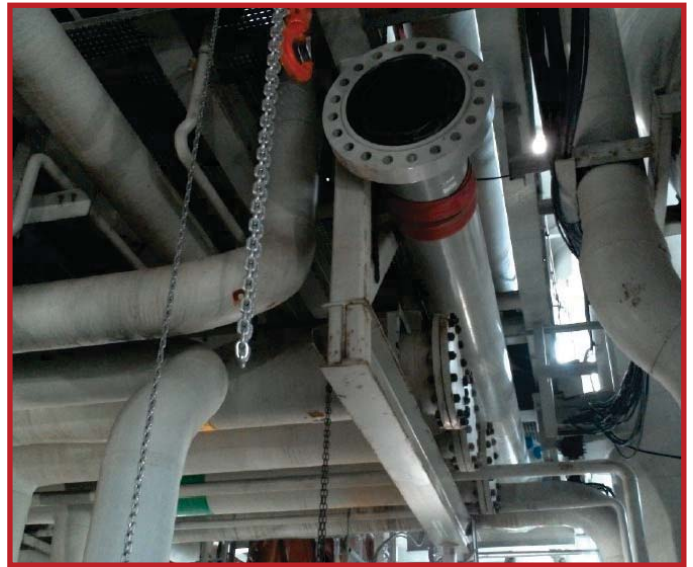


Hot Bolting Exchanger to Remove Channel Head Cover for tube Inspection





Completed Installation of 18" 2245 Spools to Section Scrubber



Installation of 18" Spool for tie-in Scrubber



Installation of PDTs on CPP Production Mezz Deck



Installation of WHRU 3 (EBN-6800) Vent Stack

## RECENT PROJECTS - 2022 (GROUP)



Installation of SDV-3073 & SDV-3273 on Production Deck

# RECENT PROJECT EXECUTION

WITH STRATEGIC ALLIANCES/PARTNERS  
WITH SUBSISTING MSA'S

SUBCONTRACTOR/PARTNER	COUNTRY OF ORIGIN	SOW
Performance Energy Services	USA	General Mechanical Services - Structural, Piping, Equipment and Fabrication
UTC International	Brazil	EPC/Brownfield Modification and Maintenance
Cronus Technology Inc	USA	Engineering Services, Riser, Flow-lines, Pipeline Design
DBR Energies	USA	Engineering Services; offshore facilities, Sub-sea, Onshore and Upstream
PERC Engineering	USA	Engineering, Survey, Sub- sea Quality Inspection
Interior Group/AOS	UK/Norway	Marine Equipment: Vessel Supply, Crew Boats, Floatel
CSE W-Industries	USA	General Electrical & Instrumentation Services
MTI Inc (Registered Distributor to Tectubi Raccordi, FAD International, Freudenberg	USA	Supply of Pipes, Fittings and Flanges
Stranco	USA	Torquing & Flange Management
Safe Zone	USA	Provision and Installation of PWE's

SUBCONTRACTOR/PARTNER	COUNTRY OF ORIGIN	SOW
Trussco Inc. (Omni Environmental Services)	USA	Provision of Equipment and Qualified Personnel for Vessel(s) Opening, Vessel and Platform Cleaning and Inspection, Platform Integrity
DM Contractors	UK	Certified Scaffolding Crew
Future Piping Inc	USA	Supervision and Labor for Fibre-bond piping installation
APAVE	Equatorial Guinea	Equipment, Supervision and Labor for Blasting and Painting Services
	Equatorial Guinea	Pre and Post Welding Heat Treatment
	Equatorial Guinea	Provision of Certified Scaffolding Supervisors and Technicians
	Equatorial Guinea	Offshore Training
Vinto Subsea	Nigeria	Diving Services
Concrane	Italy	Crane Rehabilitation
BBM SL	Equatorial Guinea	Manpower Supply
Andron Engineering Services	Equatorial Guinea	Manpower Supply
Seaweld Manpower Supply	Equatorial Guinea	Manpower Supply
Fiduge Auditores Asociados	Equatorial Guinea	Manpower Supply
CenturionLaw Group	South Africa/ Equatorial Guinea	Legal Counsel/Advisory





# Recent Project Highlights

Alen Gas Monetization Project/Turn Around 2020



Schedule .....	▶	April 2020 through May 2021
Estimated Manhours .....	▶	250,000 MH
Personnel .....	▶	250
Local Personnel .....	▶	150
No Harm Days .....	▶	290
.....	▶	



# Competitive Services In West Africa

Optimizing Value through International & Local Partnership

- ⇒ Project Management
- ⇒ Construction Management
- ⇒ Engineering Services
- ⇒ Procurement Services
- ⇒ Brownfield Construction
- ⇒ Offshore hook-up
- ⇒ Onshore/Offshore Construction
- ⇒ Mechanical Installation
- ⇒ Integrated EPCI
- ⇒ Drilling Services
- ⇒ Electrical & Instrumentation
- ⇒ Pipeline Design, Construction & Installation
- ⇒ Fabrication - Structural/Piping
- ⇒ Marine Operations
- ⇒ Pre-Commissioning/Commissioning
- ⇒ Facilities Maintenance





# Project Execution Considerations

## Operational Areas in West Africa

Successful Project Execution and Infrastructure Implementation to Perform the following Services



- ⇒ **Engineering Design, Project Management, Feasibility Studies**
- ⇒ **Brownfield Construction**
- ⇒ **Offshore hook-up & Commissioning**
- ⇒ **Onshore & Offshore Construction**
- ⇒ **Fabrication**
- ⇒ **Integrated EPCI**
- ⇒ **Marine Operations, Offshore accommodation, construction**

Investment in West Africa on relevant infrastructure, personnel training and local capacity development.

Implementation of hybrid solution for Major Offshore Construction/Fabrication by providing global support to project execution in West Africa.



Special attention is given to the training and qualification of nationals from areas of operation, and communities where projects are executed.

Part of Project focused training is carried out internationally, with nationals from areas of operations embedded with our Project Management Teams, working on the job during training. Bay Matrix Utilizes the time under training to complete any relevant personnel qualification requirements.

Other aspects of training are carried out in the project area of operation prior to project commencement.







**E-mail:** [info@westpaq.com](mailto:info@westpaq.com)

**USA:**

14140 SW Freeway, Suite 100

Sugar Land, TX 77478

**Tel:** 346-391-5432

**Fax:** 1-832-201-7971

**NIGERIA:**

2 Idowu Taylor Street,

2nd Floor, Wing A

Victoria Island, Lagos

**Tel:** 0813 880 0333

[www.westpaq.com](http://www.westpaq.com)

© 2021 WESTPAQ ENGINEERING LTD

